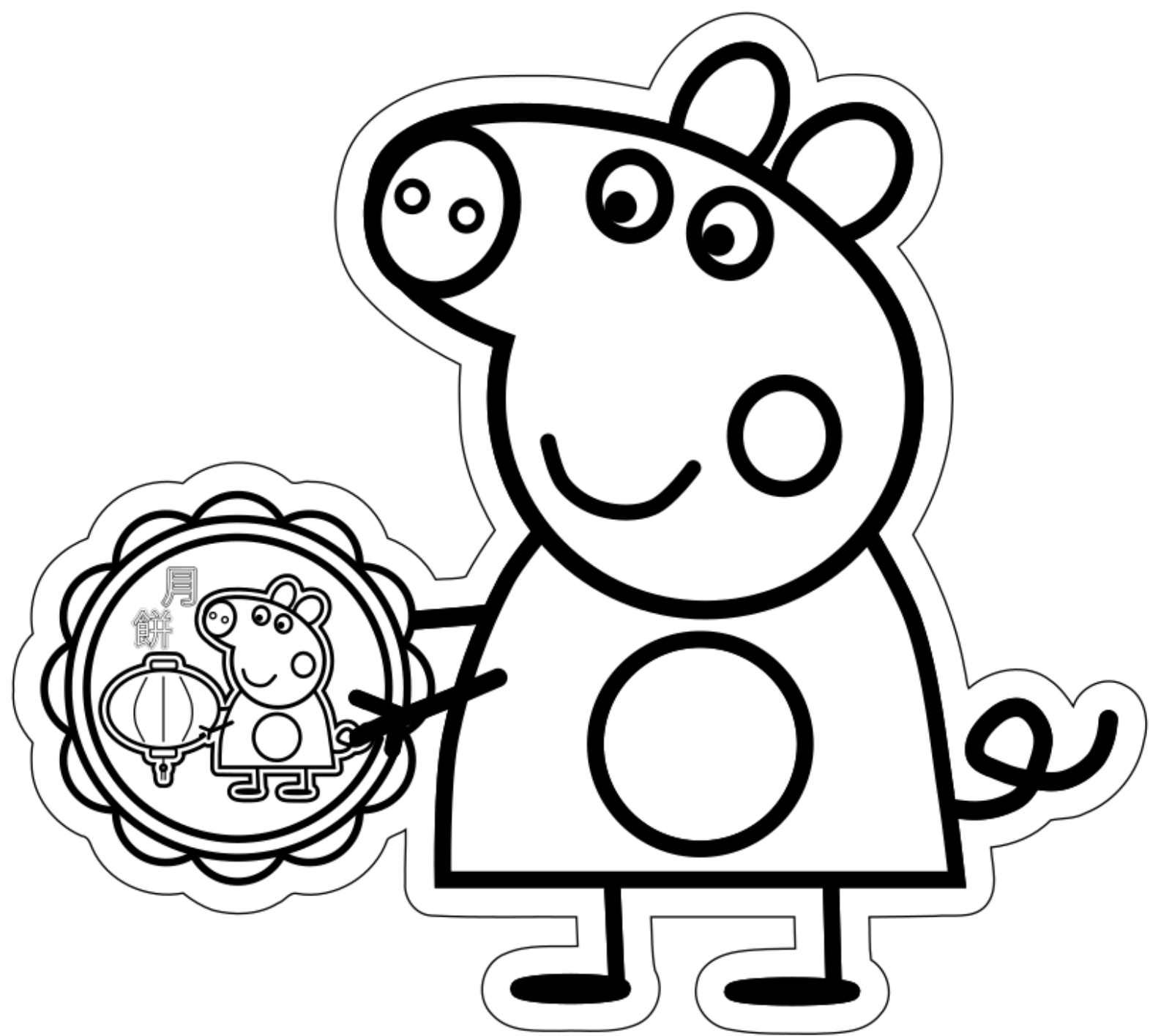
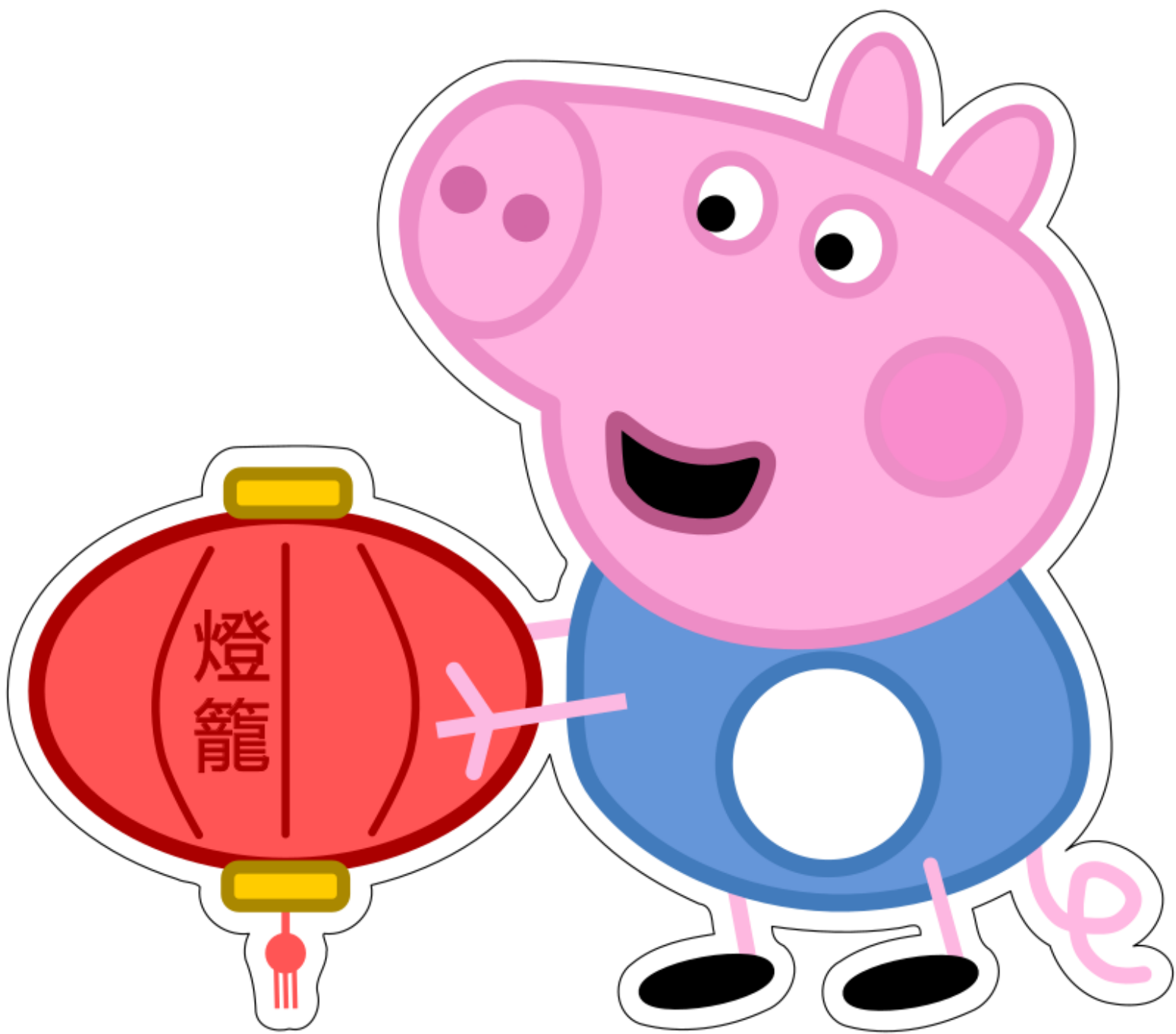
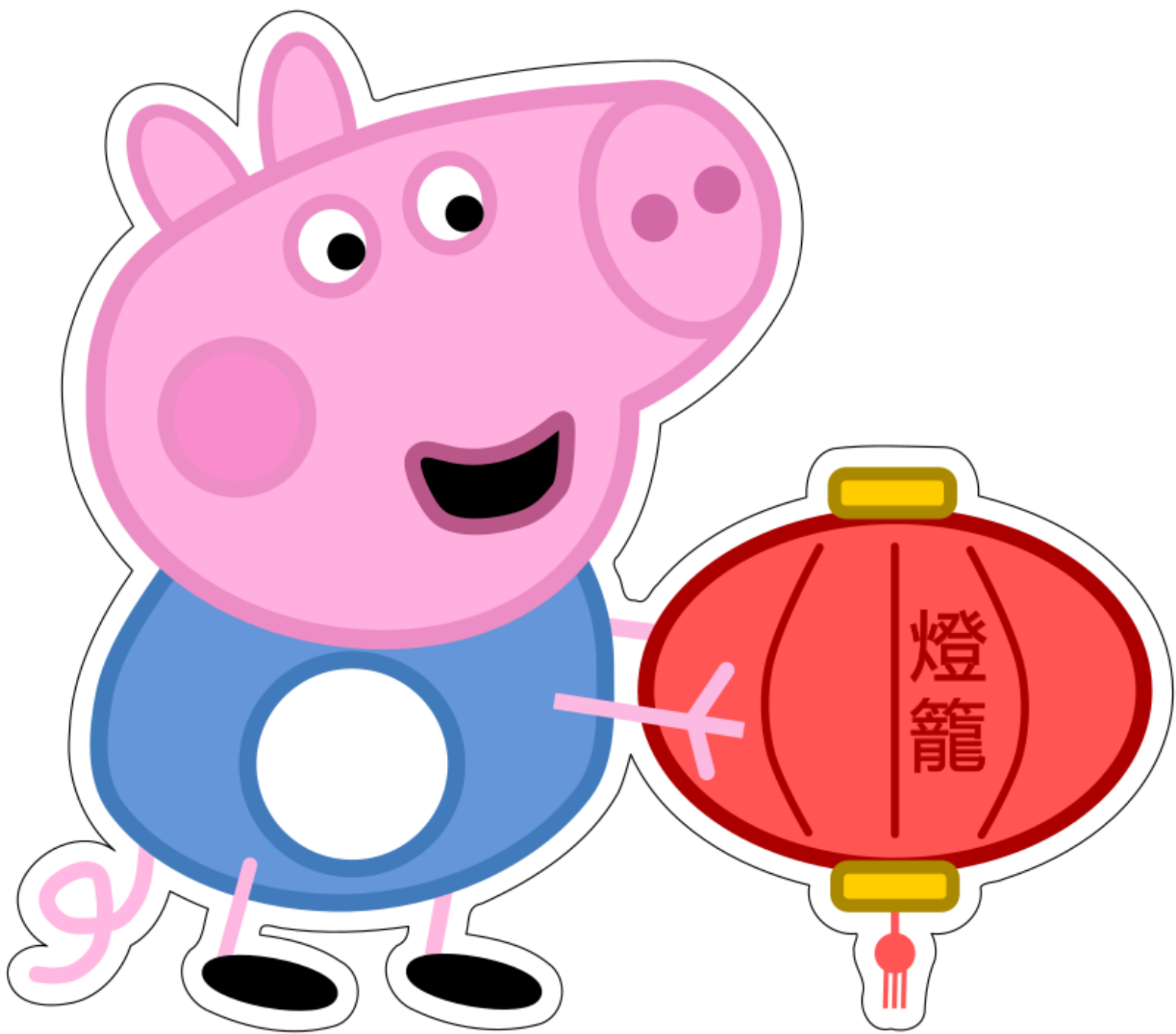


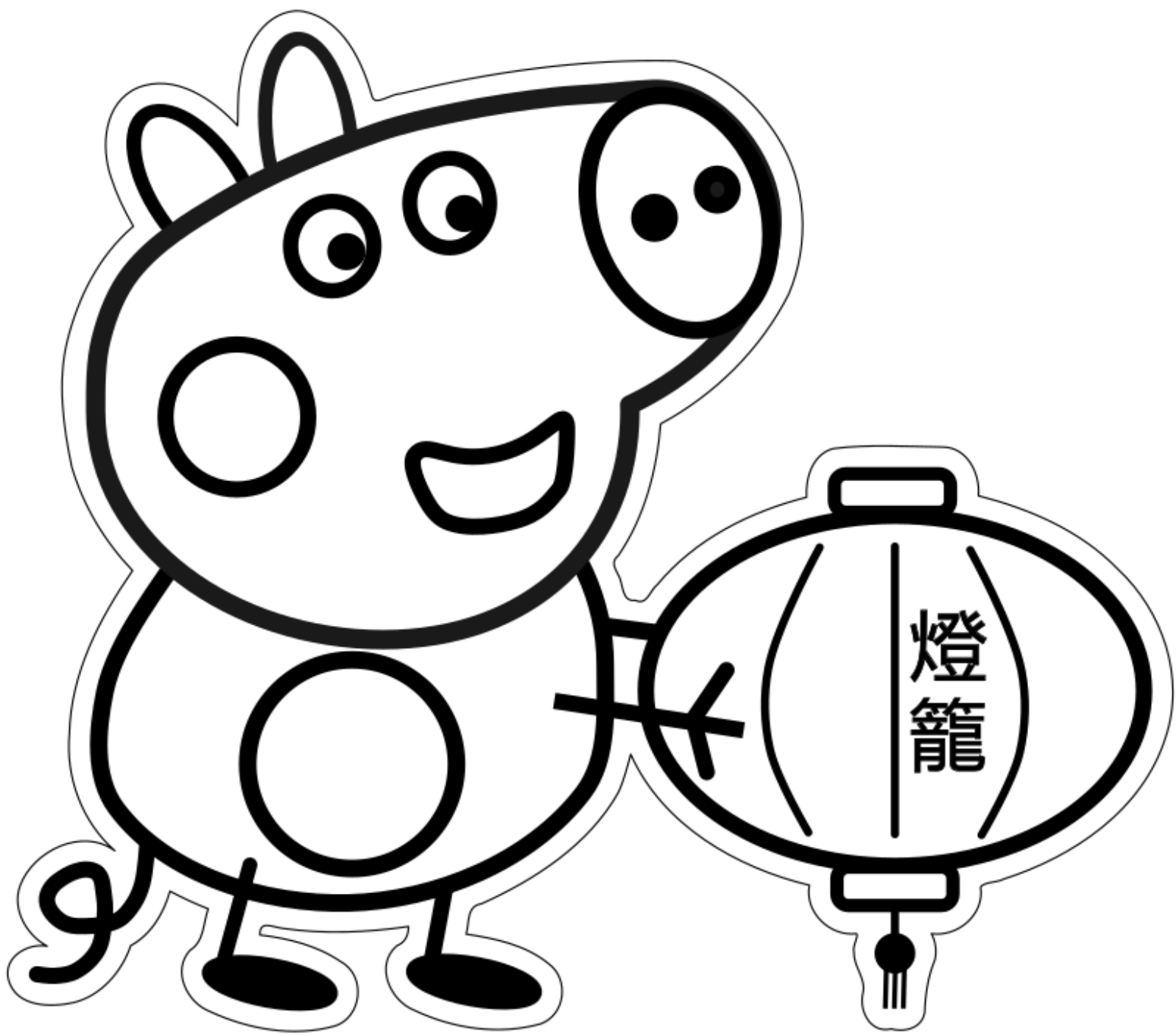
中秋節快樂



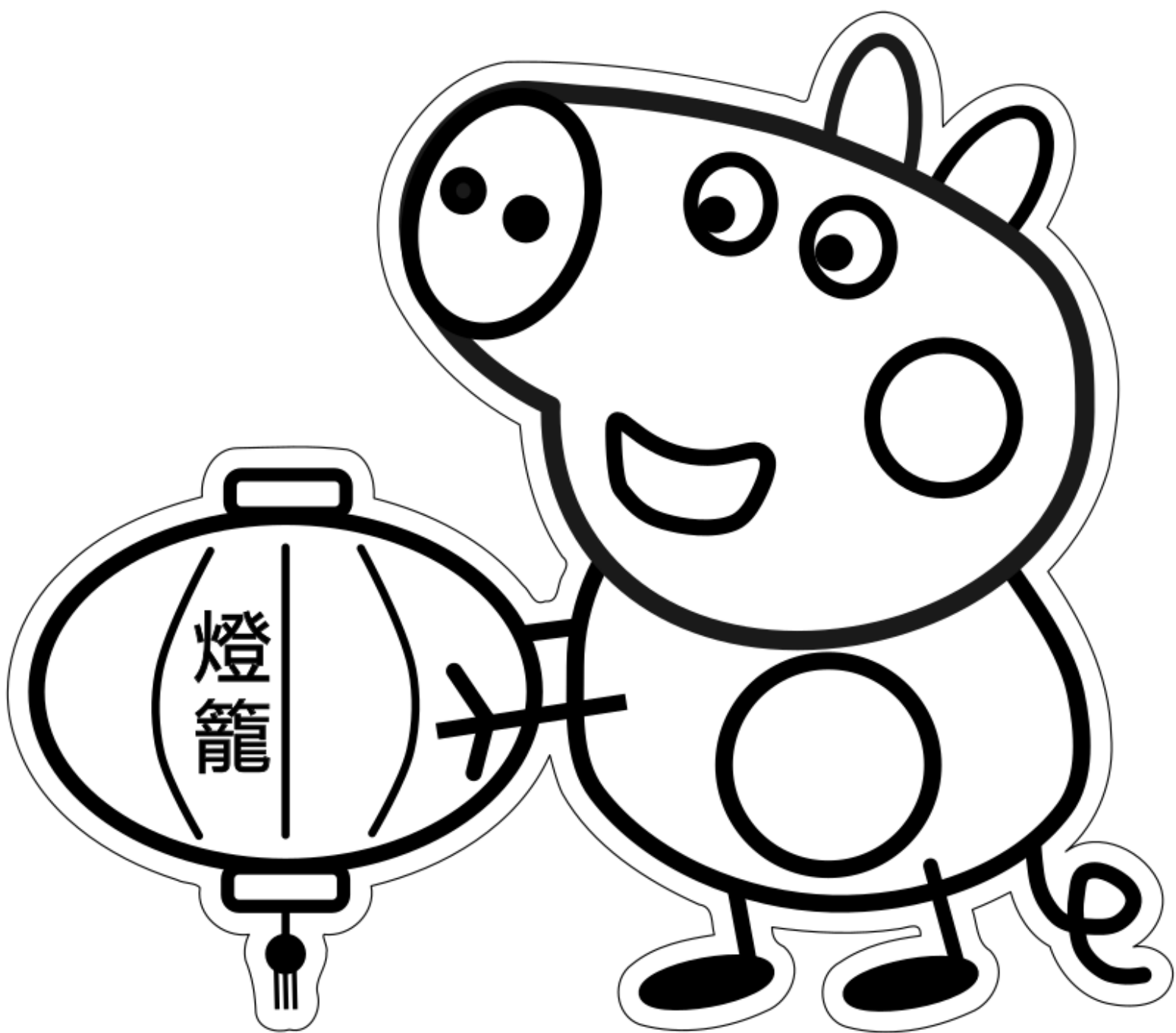
中秋節快樂



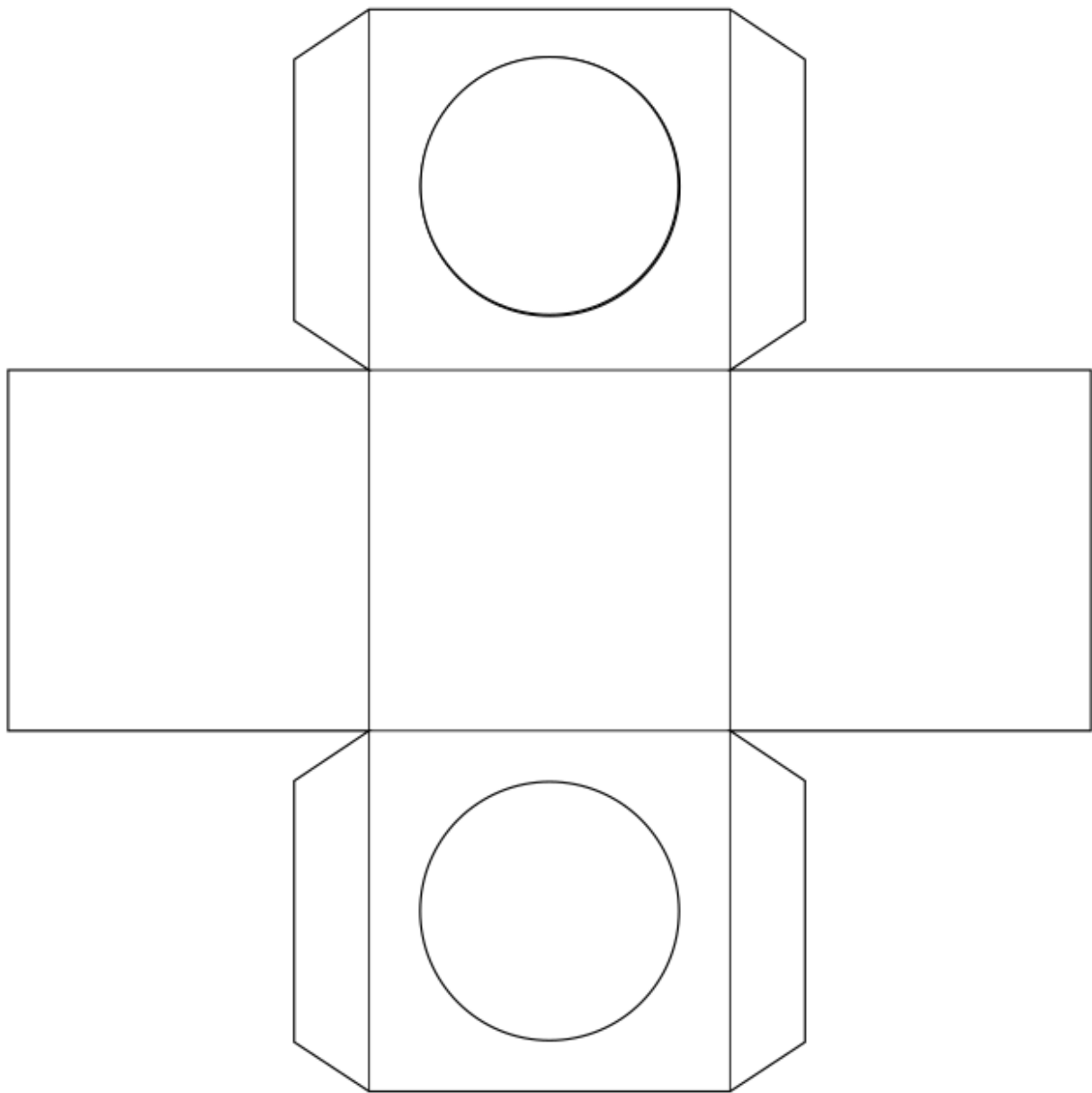




中秋節快樂



中秋節快樂



Instructions:

1. Print, (colour), and cut out outside edge of character and circle.
You will need two of the same character facing in opposite directions
2. Print, and cut outside edge of cube and circle. Form the cube.
3. Attach white tissue paper to the back of the character covering the entire circle.
4. Attach the character to the cube.
5. Punch a hole on both characters where you want the string (we used their ears).
6. Feed the string through the hole and tie to handle (i.e. stick/chopstick/dowel)
7. Add a light inside the cube.